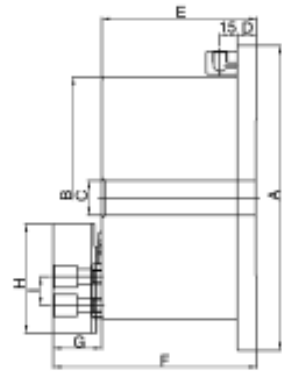
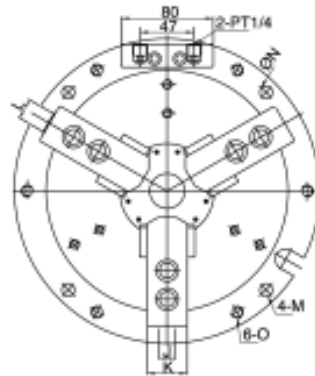


# HYDRAULIC (PNEUMATIC) HOLLOW 3-JAW CHUCK WITH INTERNAL CYLINDER



**NEW!**



MODEL	A	B	C	D	E	F	G	H	I	J	K	L	M	N	O
595-855	6.9 (176)	5.3 (135)	-	0.59 (15)	3.74 (95)	5.04 (128)	1.30 (33)	2.44 (62)	0.55 (14)	0.39 (10)	0.98 (25)	0.51 (13)	O9	O157	M8
595-856	8.8 (224)	6.65 (169)	0.98 (25)	0.63 (16)	4.64 (118)	6.22 (158)	1.57 (40)	2.87 (73)	0.79 (20)	0.47 (12)	1.22 (31)	0.71 (18)	O11	O202	M10
595-858	10.4 (265)	8.3 (210)	1.18 (30.1)	0.67 (17)	5.31 (135)	6.97 (177)	1.65 (42)	3.74 (95)	0.98 (25)	0.55 (14)	1.38 (35)	0.71 (18)	O11	O243	M10
595-860	12.4 (315)	10 (254)	2.36 (60)	0.67 (17)	5.7 (145)	7.52 (191)	1.81 (46)	4.33 (110)	1.18 (30)	0.63 (16)	1.57 (40)	0.71 (18)	O13	O285	M12

## OPTIONAL ACCESSORIES

- ▶ Pneumatic solenoid valve
- ▶ Hard jaws
- ▶ Air filter lubricator

## OPERATING SPECS:

- ▶ Internal type cylinder which provides better stability, greater efficiency, takes less space and needs less maintenance

- ▶ Chuck body made of cr-mo alloy steel and hardened guides for high precision and wear resistant performance

- ▶ Can be integrated to cnc via m-code function to enable auto loading of parts

- ▶ Mounting flange designed for easy t-slot mounting

- ▶ Dust and waterproof design prevents coolant and chips from contaminating internal workings of chuck. Thus less down time and maintenance

MODEL	Piston Area ft <sup>2</sup> (cm <sup>2</sup> )	Plunger Stroke ft (mm)	Jaw Stroke (Diameter) ft (mm)	Max.gripping force (kgf)
595-855	11.47 (74)	0.39 (10)	0.21 (5.4)	4000
595-856	15.3 (99)	0.47 (12)	0.22 (5.5)	6000
595-858	24.2 (156)	0.63 (16)	0.29 (7.4)	9500
595-860	31.6 (204)	0.75 (19)	0.35 (8.8)	13000

MODEL	Max.Pressure Setting psi. (Kg/cm <sup>2</sup> )	Gripping Force (kgf) (air press 6kg/cm <sup>2</sup> )	Gross weight lbs. (kg)	Gripping Range
595-855	241.6 (17)	1300	27.3 (12.4)	12 ~ 135
595-856	270 (19)	1800	50.7 (23)	15 ~ 169
595-858	284 (20)	2800	84.9 (38.5)	20 ~ 210
595-860	284 (20)	3700	127.9 (58)	33 ~ 254

WORKHOLDING